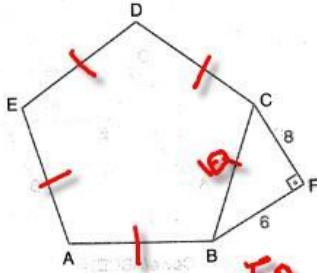


ÇOKGENLERDE ALAN İLE İLGİLİ SORULARIN CEVAPLARI

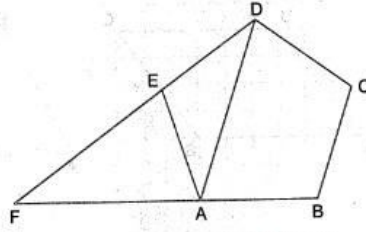
Aşağıdaki şekillerde verilen bilgilere göre soruları çözünüz.

a) ABCDE düzgün beşgen.



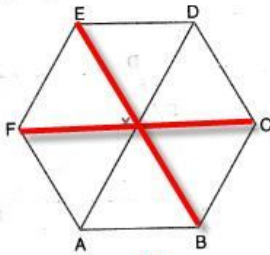
Çevre(ABCDE) = 50

b) ABCDE düzgün beşgen, Çevre(ADE) = 12 cm



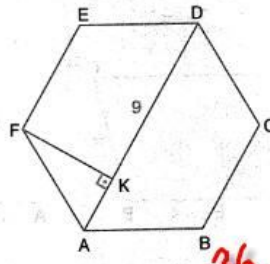
Çevre(FBCD) = 24

c) ABCDEF düzgün altıgen, Çevre(ABCDEF) = 12 cm



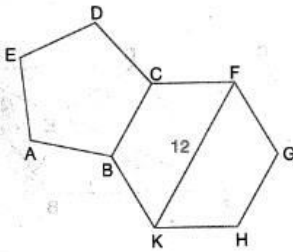
|AD| = x = 4

d) ABCDEF düzgün altıgen, |KD| = 9 cm



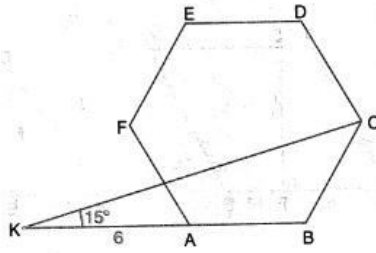
Çevre(ABCDEF) = 36

e) ABCDE düzgün beşgen, BCFGHK düzgün altıgen, |KF| = 12 cm

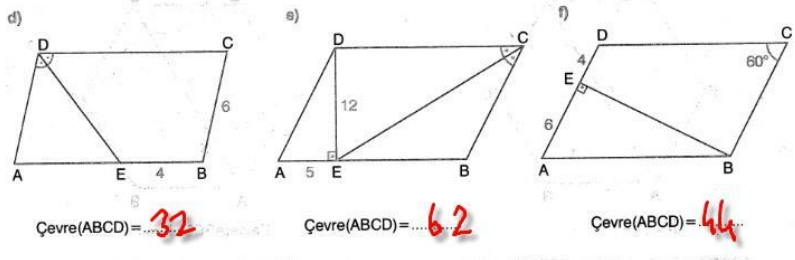
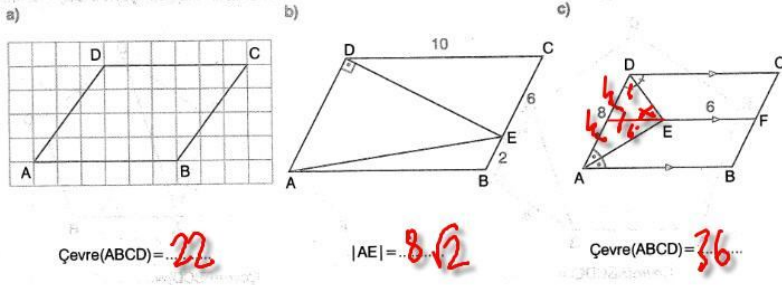


Çevre(ABCDE) = 30

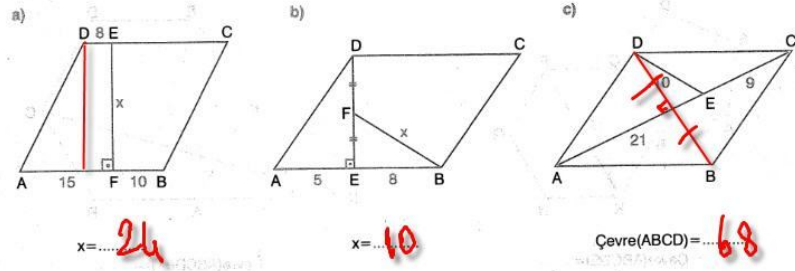
f) ABCDEF düzgün altıgen, KBC üçgen $m(\widehat{BKC}) = 15^\circ$, |KA| = 6 cm



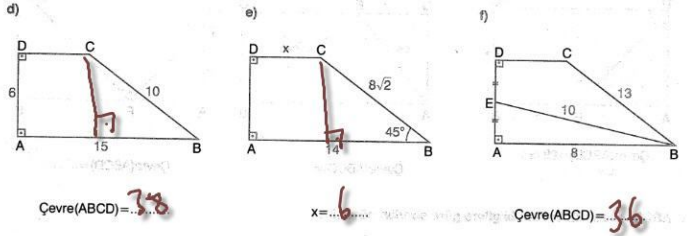
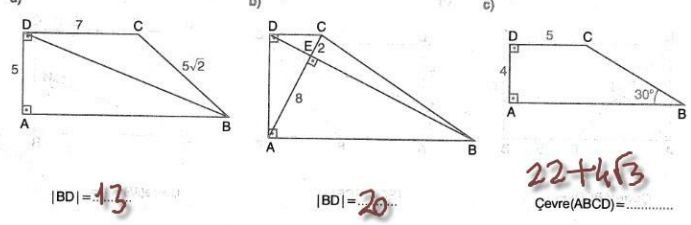
Çevre(ABCDEF) = 12√3



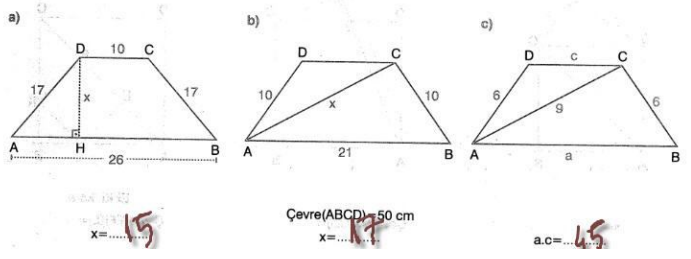
2) ABCD eşkenar dörtgeninde verilen bilgilere göre soruları çözünüz.



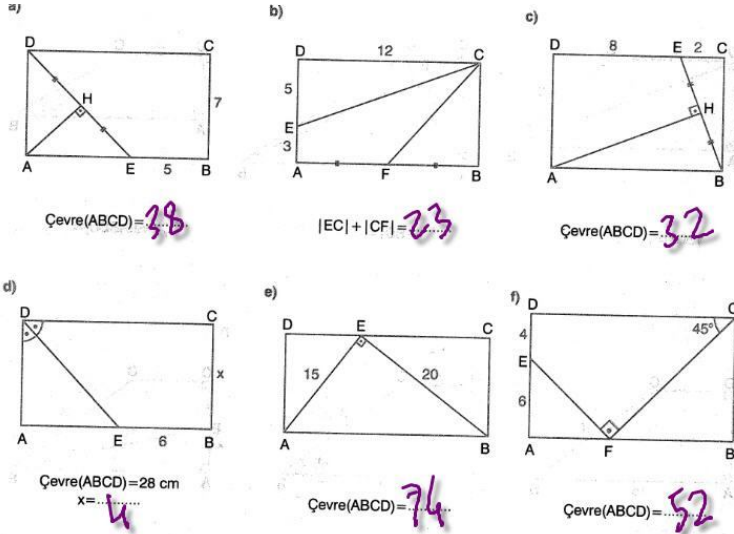
Çorum Anadolu Lisesi Mat.Öğrt.Ali SANCI



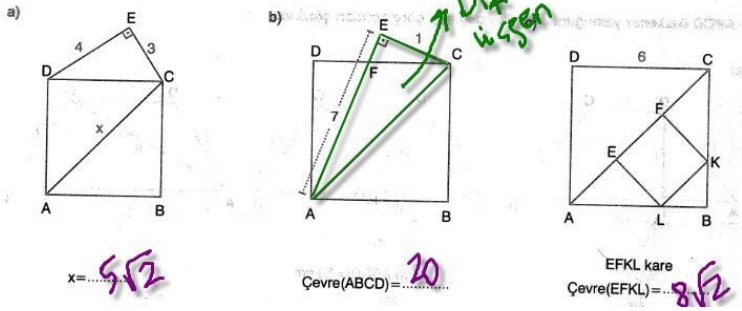
2) ABCD ikizkenar yamugunda verilen bilgilere göre soruları çözünüz.



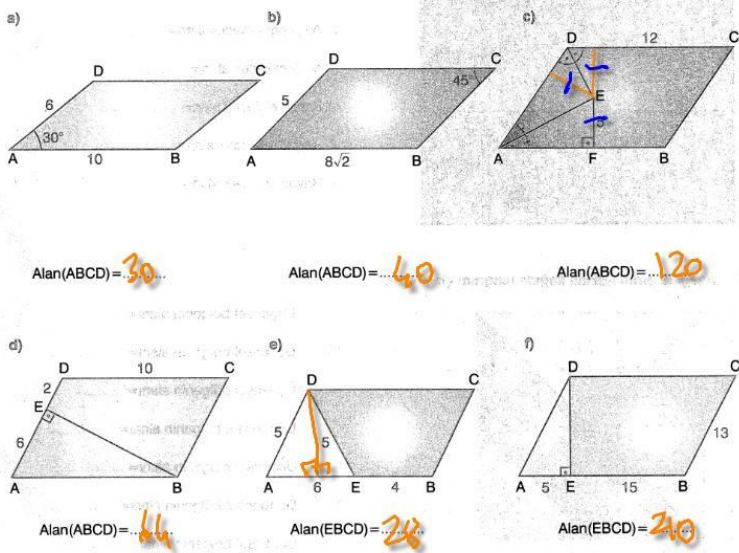
Çorum Anadolu Lisesi Mat.Öğrt.Ali SANCI



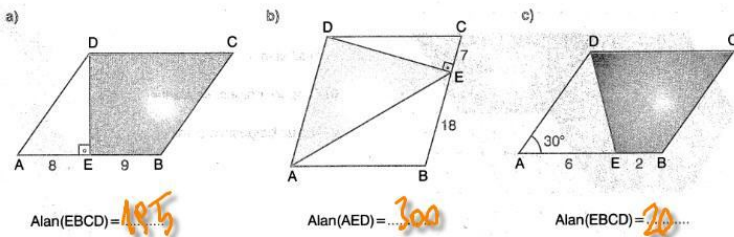
2) ABCD karesinde verilen bilgilere göre soruları çözünüz.



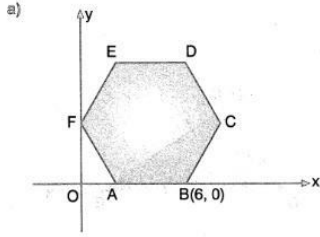
Çorum Anadolu Lisesi Mat.Öğrt.Ali SANCI



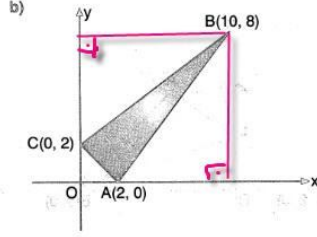
2) ABCD eşkenar dörtgeninde verilen bilgilere göre soruları çözünüz.



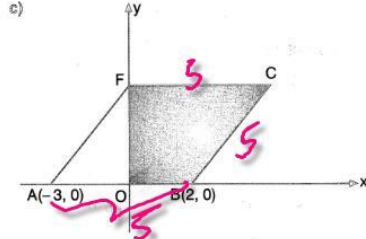
Çorum Anadolu Lisesi Mat.Öğrt.Ali SANCI



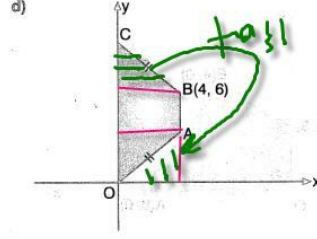
ABCDEF düzgün altıgen
Alan(ABCDEF) = $24\sqrt{3}$



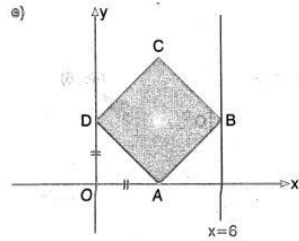
Alan(ABC) = 16



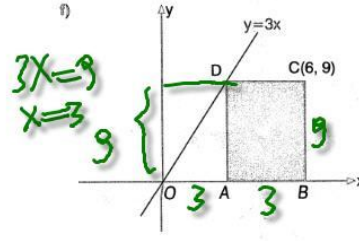
ABCD eşkenar dörtgen
Alan(OBCF) = 11



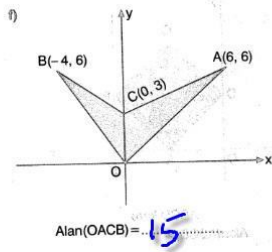
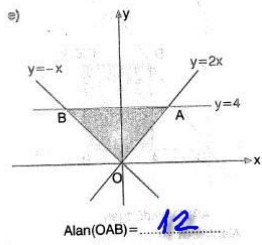
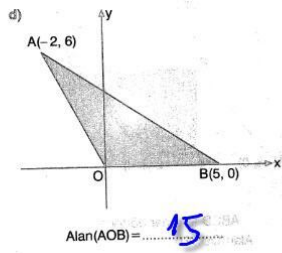
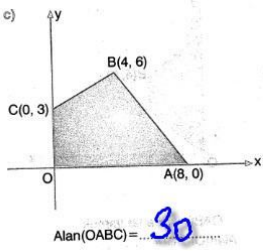
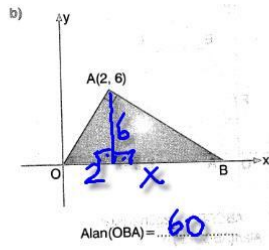
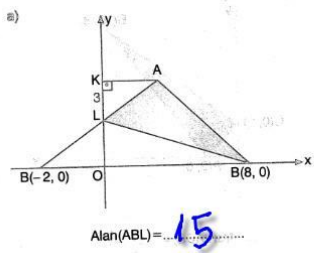
OABC ikizkenar yamuk
Alan(OABC) = 24

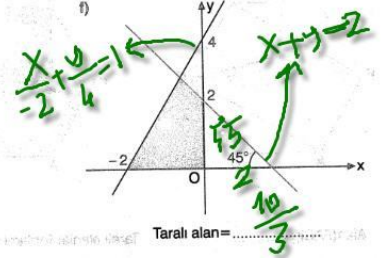
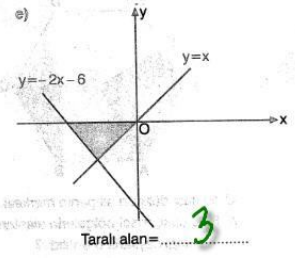
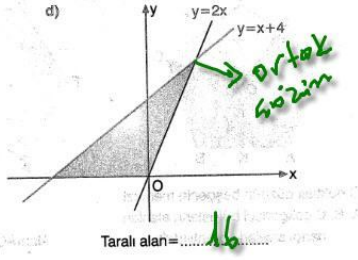
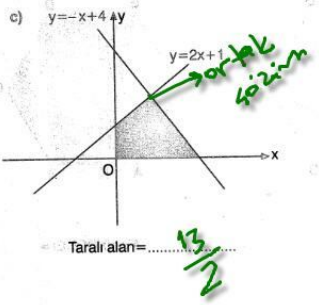
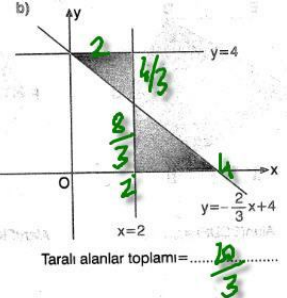
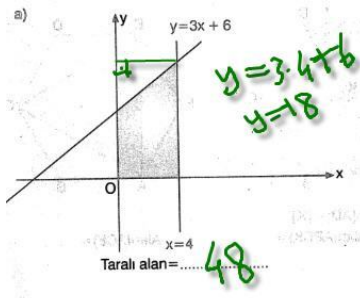


ABCD kare
Alan(ABCD) = 18



ABCD dikdörtgen
Alan(ABCD) = 27





a) Alan(BCDF) = $64\sqrt{3}$

b) Alan(FKDE) + Alan(ABCK) = $16\sqrt{3}$

c) Alan(ACE) = $27\sqrt{3}$

d) O noktası düzgün beşgenin merkezi. A, B, C çokgensel bölgelerin alanları hangi sayılarla orantılıdır?
 $3, 4, 3$

e) Alan(ACDEF) = $20\sqrt{3}$

f) Alan(KBCDE) = $39\sqrt{3}$

g) Alan(KBCDE) = $18\sqrt{3}$

h) Alan(KBCDE) = $80\sqrt{3}$

ı) O noktası düzgün altıgenin merkezi. A, B, C çokgensel bölgelerin alanları $5, 4, 3$

www.geometri9.com

a) Alan(EFBC) = 66

b) Çevre(ABCD) = 20 cm
Alan(ABCD) = 24

c) Alan(EBCD) = 114

d) Alan(AFD) = 16

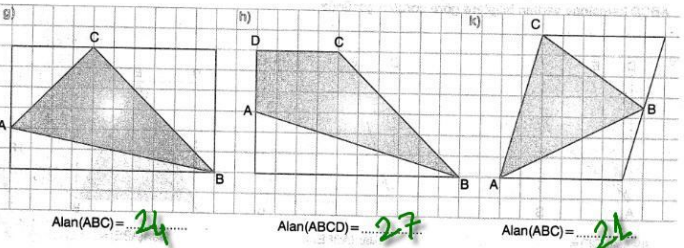
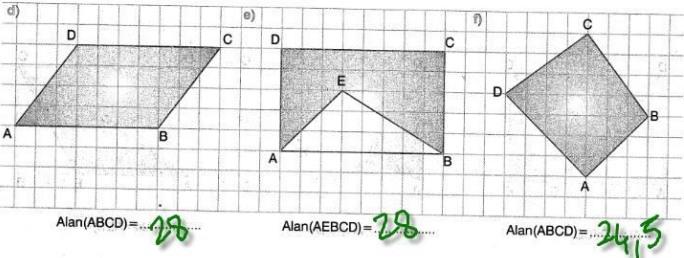
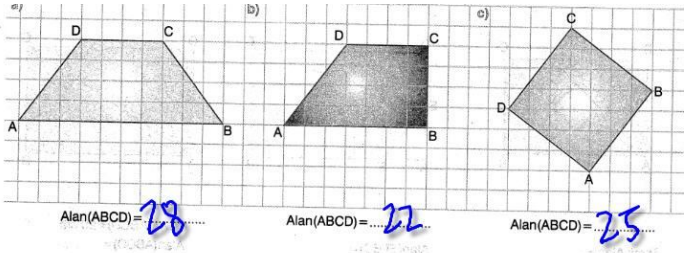
e) Alan(AEC) = 78

2) ABCD karesinde verilen bilgilere göre soruları çözünüz.

a) Alan(AECF) = 8.4

b) Alan(ABFE) = 9.6

c) Alan(ABE) = 50



www.geometri9.com

Not: Bu soruların kullanım hakkı birey yayınlarına aittir. Hiç bir şekilde ticari amaç için kullanılamaz.